

LightSail Features Guide

Student Dashboard

1 ThinkFeed

Tuesday, November 6 at 11:58am
Your comments about
The Giver
 Why are they so focused on this apple? I sense there's something strange about it, but I don't understand what...
 RL.4 | Page 21

Wednesday, November 7 at 3:34pm
Mr. Smith
 That is a very good observation, Todd. Can you find other places in the story where the apple might be relevant?
 Respond...

Monday, November 5 at 3:32pm
Your comments about
Tuck Everlasting
 "Believe me, Winnie Foster," said Jesse, "it would be terrible for you if you drank any of this water. Just terrible. I can't let you."
 Jesse is a very mysterious character. He doesn't explain himself well to Winnie, so I can understand why she...
 RL.3 | Page 24

Wednesday, November 6 at 10:52am
Khalil Brown
 Maybe there is something wrong with the water. It seems like Jesse knows a secret that he isn't ready to tell...
 Respond...

3 Alerts

- Library 5
- Events 3
- 20 min ago **Your short response was graded**
- Yesterday **Khalil Brown commented on your thought in "Tuck Everlasting" from November 5, 2014**
- 8 days ago **New Goal: Increase my Lexile Measure to 810L by December 1**
- 10 days ago **Mr. Smith replied to your thought**

4 Progress

Lexile Measures

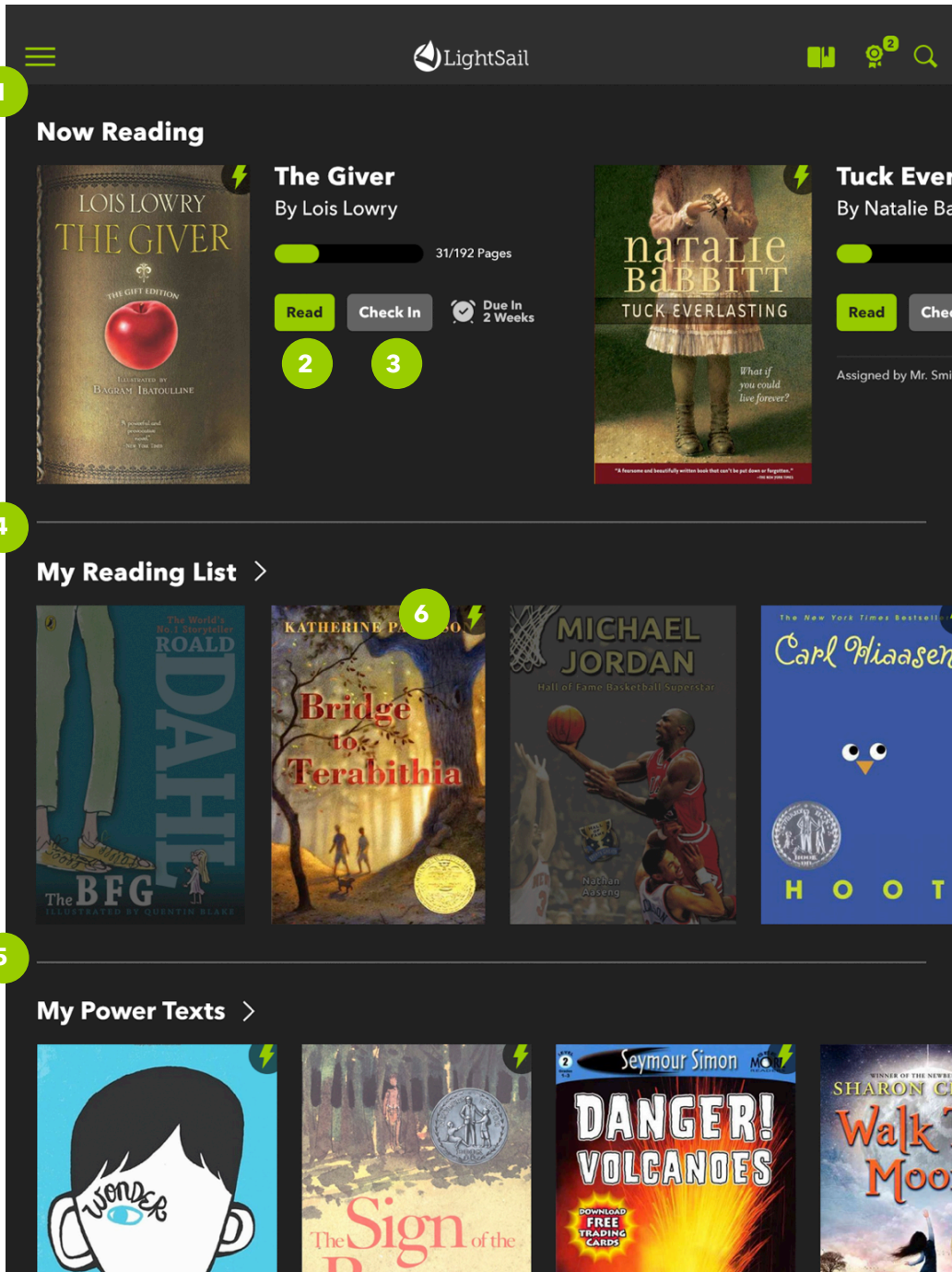
Level	Lexile Measure	Status
Beginning	730L	Recorded
Beginning	750L	Recorded
Middle	750L (11/8)	Recorded
Middle	820L	Predicted
End	840L	Target
End	915L	Target
End	940L	Target

5 Now Reading

The Giver
 By Lois Lowry
 31/192 Pages
 Read Check In Due In 2 Weeks

- 1 The ThinkFeed contains a student's in-text annotations and real-time teacher feedback.
- 1 Annotations appear with the student's highlighted text.
- 2 Students receive alerts about a variety of activities and events.
- 3 The Lexile Measure Timeline shows a student's current and predicted Lexiles.
- 4 Now Reading gives the student quick access to his or her current books.
- 5 The Global Navigation Icon opens the navigation menu to give access to other parts of the app.
- 6 The Book Icon gives quick access to the student's current books.
- 7 The Badge Icon takes the student to his or her Badge Library. The number indicates new badges earned.
- 8 The Magnifying Glass allows the student to quickly find specific text within a book.

Student Library



- 1 The Now Reading bookshelf displays books that a student has checked out. Students are able to check out up to two books at a time.
- 2 Tapping the Read button allows the student to open a book and begin to read.
- 3 Tapping the Check In button returns the book to the Library.
- 4 My Reading List displays books that the student has marked to read later.
- 5 My Power Texts displays books that are "just right" for that particular student.
- 6 The Lightning Bolt icon indicates that a book is a Power Text.

Student eReader Functions

The screenshot displays the LightSail eReader interface on a mobile device. At the top, the status bar shows Verizon service, signal strength, Wi-Fi, 3:27 PM, and 73% battery. The LightSail logo is centered in the header. Below the header, a search bar (labeled '2') is on the left, and font size controls (labeled '3') are on the right. The page title is 'Number the Stars' and the page number is '12'. The main text is the story 'Where Was Mama?'. A progress bar at the bottom indicates '62 of 89 Pages' (labeled '4').

1 Tapping the middle of the page brings up a variety of eReader functions.

2 The Search Text box allows students to search for particular words or phrases inside the text.

3 By tapping along the continuum of font sizes, a student can make the text larger or smaller.

4 The slide tab on the bottom of the page shows a student progress within a text and also allows a student to go back to a particular page that he or she has already read.

Student Cloze Assessment

Ramón was first to answer. “I was thinking the same thing. Besides, I want to watch the moonrise through my [1].”

Wil jumped right up. “Ramón, you rule.”

Within minutes, all seven boys had grabbed their bags and dragged them outside. In the center of the lawn, just beyond a gnarly, umbrella-branched pepper tree, they threw their pillows into a small circle, then laid their bags out from there like spokes on a wheel.

It’d been almost a year since Tom had slept outside, but he remembered right away what he liked most about it. The sky. The mountain sky was filled with thousands of stars, from tiny, dim ones to some as bright as airplane lights. And they went all the way down. That’s what he liked the most. In every inch of sky, from the middle of the diamond dome all the way down to the hills and trees, stars pinpricked the night.

“You know,” said Cruz, “I could lie here and look at stars all night.”

“Yeah, me, too,” said Tom.

“I could look at `em all day,” said Frankie. “Except that, the problem with daytime is, if you see one star, you’ve seen `em all.”

Select a word by tapping -

- classmate
- telescope 3
- overboard
- horseback

- 1 The green box indicates where a cloze assessment is located. Cloze items assess vocabulary in context and are what LightSail uses to continually monitor students’ Lexile measures.
- 2 When the student taps the green box, four word choices populate the right side of the screen.
- 3 The student taps the word that he/she thinks fits in the sentence and is provided with real-time feedback.

Student Multiple Choice

Comprehension Check

Practicing Key Ideas and Details
R.2 Determine central ideas or themes of a text and analyze their development; summarize the key supporting details and ideas.

1

2

3

4

5

6

Listen to Question

Submit Answer

Look Back in Text

Which sentence from the text best expresses the central idea of this chapter?

- But there were a few exceptions: Jonas himself, and a female Five who he had noticed had the different, lighter eyes.
- "When you're an Eight and start your volunteer hours, you can try some at the Nurturing Center," Mother suggested.
- He realized, though, that not focusing on one area meant he was left without the slightest idea - not even a guess - of what his Assignment would be.
- There was no doubt that Benjamin would receive his Assignment to that field and would probably be permitted to bypass most of the training.

- 1 The Common Core Standard being assessed appears above the question.
- 2 The question populates under the Common Core Standard.
- 3 Play Buttons allow the student to hear the question read aloud or answer choices.
- 4 The student taps the circle next to the answer he or she thinks is correct.
- 5 Tapping Look Back in Text takes the student back into the book to look for text evidence.
- 6 Tapping Submit Answer provides the the student with real-time feedback for his or her performance on the multiple choice assessment.

Student Thoughts

The Giver

centers of manufacture and distribution where the daily work of the community occurred.

Jonas was glad that he had, over the years, chosen to do his hours in a variety of places so that he could experience the differences. He realized, though, that not focusing on one area meant he was left with not the slightest idea—not even a *guess*—of what his Assignment would be.

He laughed softly. Thinking about the Ceremony again, Jonas? he teased himself. But he suspected that with the date so near, probably all of his friends were, too.

He passed a Caretaker walking slowly with one of the Old in the hall. “Hello, Jonas,” the young uniformed man said, smiling pleasantly. The woman beside him, whose arm he held, was hunched over as she shuffled along in her soft slippers. She looked toward Jonas and smiled, but her dark eyes were clouded and blank. He realized she was blind.

He entered the bathing room with its warm moist air and scent of cleansing lotions. He removed his tunic, hug it carefully on a wall

Add Thought

Share with Teacher

Jonas is apprehensive about what the future holds for him because unlike his peers, he never focused on one area. Now he is worried about what his future may hold for him.

Add Standard

Cancel Save Thought

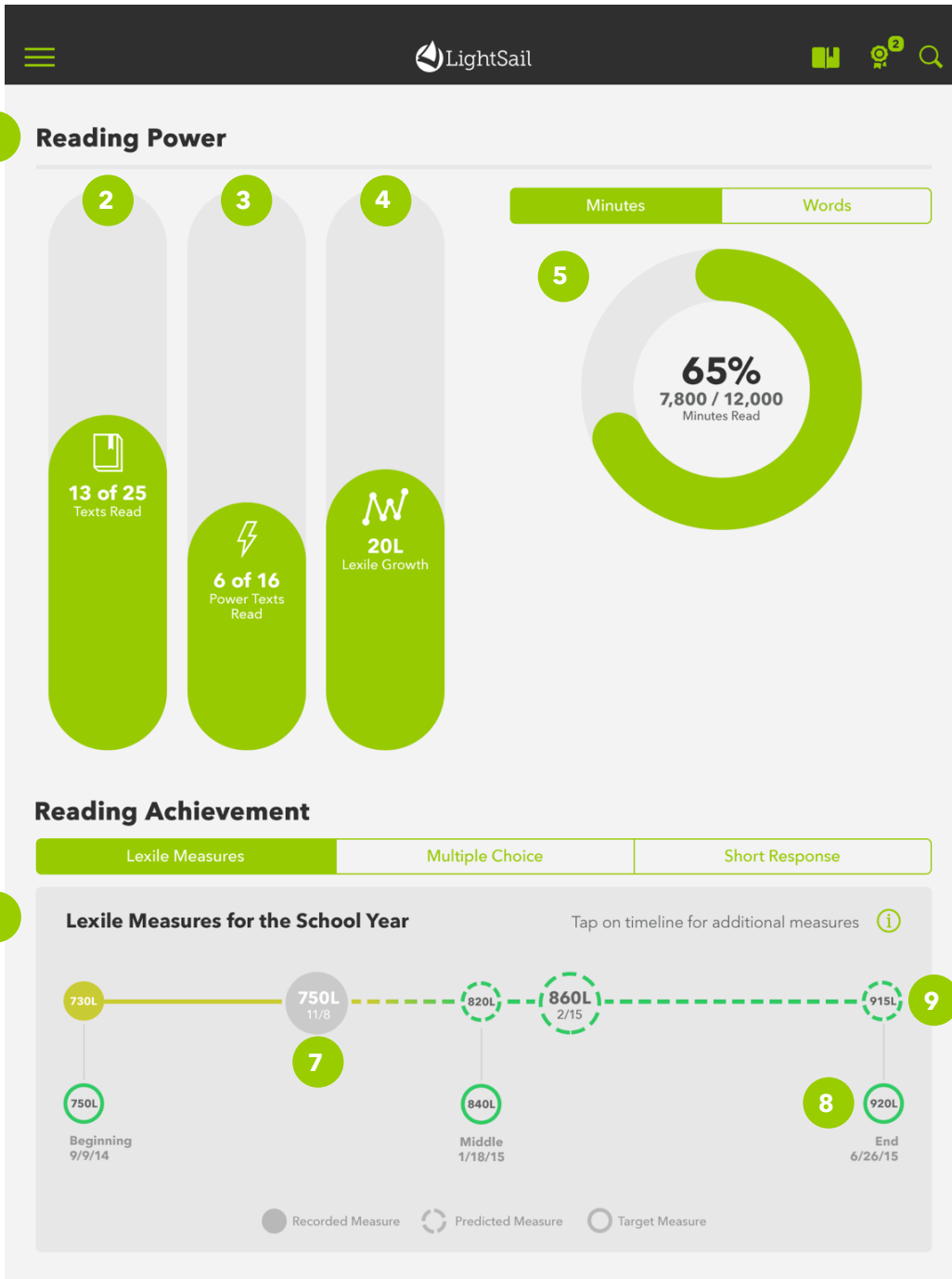
- 1 A student can highlight a section of the text to make a thought.
- 2 The Share with Teacher drop down menu allows the student to determine if the thought is shared with the entire class or only the teacher.
- 3 The student uses the keyboard to type his or her thought into the white field.
- 4 The Add Standard button allows the student to link the thought to one of the Common Core standards.
- 5 The student has the ability to choose one of five colors to highlight the chosen text.
- 6 The Cancel button deletes both the thought and the colored highlight within the text.
- 7 The Save Thought button saves the thought within the text. It will also populate on both the student and teacher dashboard.

Student Portfolio

The screenshot shows the LightSail Student Portfolio interface. At the top, there is a navigation bar with the LightSail logo and icons for home, notifications, and search. The main content area is titled 'Portfolio' and features a sidebar on the left with a list of books. The selected book, 'The Giver', is highlighted in green. The main view for 'The Giver' includes a header with the book title, author (LORD OF THE FLIES), and genre (Literature). Below the header are three tabs: 'Thoughts', 'Vocabulary', and 'Assessments'. The 'Assessments' tab is active, showing a 'Cloze Assessments' section with a progress indicator '46 / 90 Completed' and a large green box displaying an '83% Average Score'. Below this are two columns: 'MISSED CLOZE ASSESSMENTS' and 'DEFINED WORDS'. The 'MISSED CLOZE ASSESSMENTS' column lists words like 'auditorium', 'combined', 'stunning', 'fled', 'allowances', 'precious', 'failure', and 'displayed' across different dates. The 'DEFINED WORDS' column lists words like 'peaceful', 'exercise', 'distribution', 'tabulated', 'gravitating', 'bypass', 'accomplishments', 'structures', and 'dwellings' across different dates.

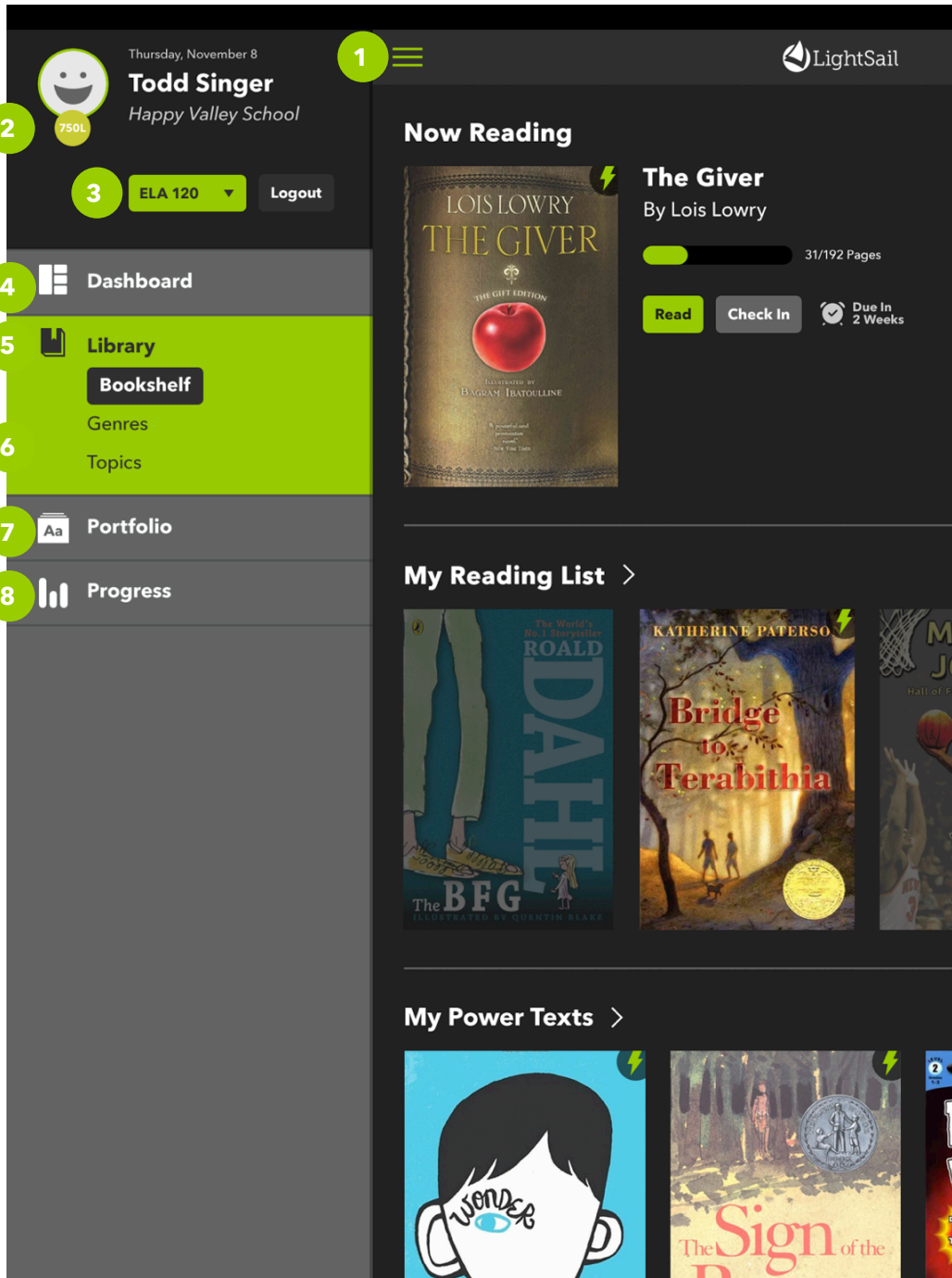
- 1 The Portfolio shows a student's activity by book.
- 2 The Thoughts tab enables students to view any thoughts they made while reading. Thoughts show up with the related highlighted text and include any teacher responses.
- 3 The Vocabulary tab shows information related to cloze performance and vocabulary work.
- 4 The Assessments tab displays performance results for multiple choice and short response questions for each text. Students can do item analysis for short response items.
- 5 The Cloze Assessments box shows a student's performance on cloze assessments within the highlighted book.
- 7 The Missed Cloze Assessments section of the Word Wall displays any incorrect choices from cloze assessments within the highlighted book.
- 8 The Defined Words section of the Word Wall lists any words the student looked up in the in-text dictionary while reading.

Student Progress



- 1 The Progress page shows student growth.
- 2 The Text Count Meter logs the number of texts a student reads in relation to a predetermined goal.
- 3 The Power Text Meter tracks the number of Power Texts a student reads.
- 4 The Lexile Growth Meter keeps track of overall Lexile Growth (Year to Date).
- 5 Total Reading Minutes and Words Wheel shows current reading volume in relation to a year-long goal.
- 6 The Lexile Prediction Timeline displays past, present, and future predicted Lexile measures.
- 7 The large bubble shows a student's current Lexile measure, and its color denotes where that measure is in relation to benchmark Lexile measures.
- 8 The numbers below the Lexile Prediction Timeline show target Lexiles for the beginning, middle, and end of the year.
- 9 The final number on the timeline indicates the student's end-of-year predicted Lexile, as calculated by current Lexile and recent pace of progress.

Student Navigation Bar



- 1 The Global Navigation Icon opens the navigation menu to give access to other parts of the app.
- 2 The student's Lexile is shown in a colored circle next to his or her name.
- 3 The green class dropdown menu allows students to switch from one class where they use LightSail to another.
- 4 The Dashboard tab takes the student to the Dashboard, the student's home base.
- 5 The Library tab leads to the Student Library, including Now Reading, My Reading List, and the Power Text shelf.
- 6 The Genres and Topics tabs show the entire Library organized by genre or topic.
- 7 The Portfolio tab leads to the Student Portfolio. Here, the student can see activity, including thoughts, assessments, and vocabulary, organized by book.
- 8 The Progress tab opens the Student Progress page, where students can see various metrics around completion and growth.

Teacher Student Status Progress Page



1 Student Status

Student	Lexile	Current Location	Currently Reading	Minutes/Page	Thoughts Created	Last Login
Tami Baker	740L	E-Reader	600L <i>Fantastic Mr. Fox</i>	1.25	2	11/6/14
Khalil Brown	790L	E-Reader	740L <i>Who is Barack Obama?</i>	1.30	1	11/6/14
Santiago Cruz	685L	E-Reader	610L <i>Encyclopedia Brown Finds the...</i>	1.00	2	11/6/14
Shamar Cum...	860L	ClassFeed	940L <i>Little Giants</i>	1.75	3	11/6/14
Bobby Davis	710L	E-Reader	650L <i>Bottle-nosed Dolphins</i>	1.50	4	11/6/14
Alejandro Ga...	890L	E-Reader	1000L <i>The Watsons Go to Birmingham</i>	1.75	2	11/6/14
Elyssa Hunt	810L	Portfolio	950L <i>Diary of a Wimpy Kid</i>	2.25	1	11/6/14
Imani Johnson	970L	E-Reader	1000L <i>The Phantom Tollbooth</i>	1.60	3	11/6/14
Thalia Jones	805L	E-Reader	740L <i>What Lives in the Arctic?</i>	1.80	4	11/6/14
Rashanda King	750L	E-Reader	820L <i>Umbrella Summer</i>	1.25	2	11/6/14
Fatoumata Ko...	950L	Portfolio	940L <i>Dust of Eden</i>	2.00	2	11/6/14
Casey Long	955L	E-Reader	980L <i>Terrifying Tornadoes</i>	1.50	3	11/6/14
Camila Lopez	920L	E-Reader	910L <i>Dear Mr. Henshaw</i>	2.25	1	11/6/14
Jayden Martin	770L	E-Reader	780L <i>The Indian in the Cupboard</i>	2.00	2	11/6/14

- 1 The Student Status Page shows a snapshot of what students are doing in LightSail at any given moment.
- 2 Tapping on the three dots brings up options to navigate to that student's Portfolio or Progress Pages.
- 3 The Lexile column shows an updated Lexile level for each student. Colors indicate relationship to benchmark, and arrows indicate recent Lexile trends.
- 4 Current Location identifies each student current location within the app.
- 5 Currently Reading lists the name and Lexile of the book each student is currently reading.
- 6 Minutes/Page provides an average reading speed of pages per minute.
- 7 Thoughts Created shows a running count of the amount of annotations written by each student.
- 8 Last Login provides the date each student last logged-in to LightSail.